

Science with Passion



AZURA[®] Bio purification



Extensive and flexible FPLC solutions.

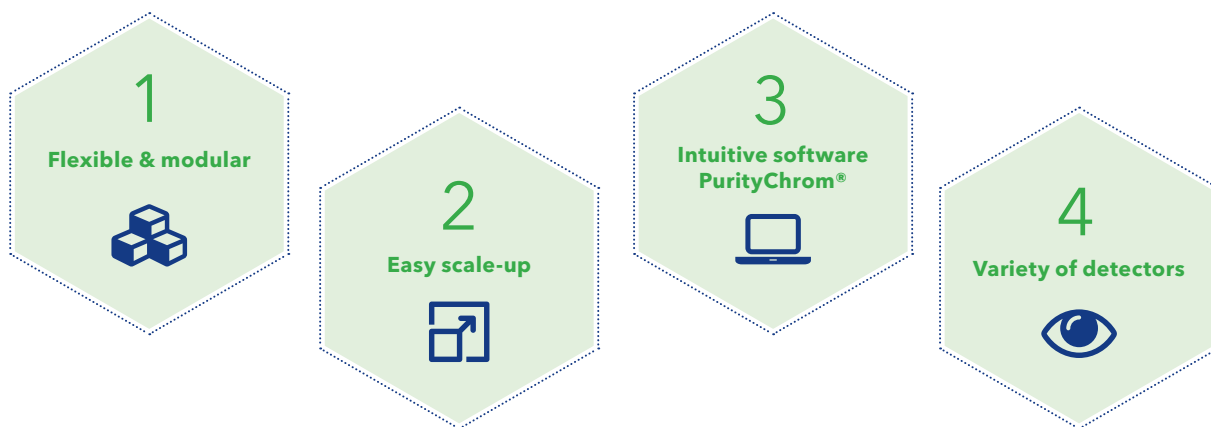
think **LC.** think **KNAUER.**

KNAUER protein purification

The flexible FPLC platform

AZURA® Bio purification systems

Complete solutions for FPLC on a minimum footprint: AZURA FPLC systems combine flexibility and reliability. The biocompatible/metal-free FPLC is the perfect choice for your protein purification task.



Design your AZURA Bio purification system to your needs. Multiple functionalities such as automatic sample injection via autosampler, column switching, buffer and sample selection as well as fraction collection enable the user to automate the purification process.

A large range of different detectors make your target molecules visible. Different flow rates and compatibility to columns from all vendors offer maximum flexibility. The intuitive software PurityChrom® combines all the advantages of a versatile purification software.

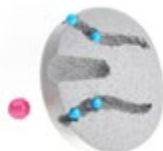
Fast Protein Liquid Chromatography (FPLC)

FPLC is a liquid chromatographic method for purification of large biomolecules like proteins. External factors like high temperature, high pressure, extreme pH, or solvents can disturb the protein structure and are therefore avoided in FPLC. Be-

sides, the method uses column materials out of agarose or polymer material which are very sensitive against pressure fluctuations and air bubbles. **We designed our systems to meet your purification challenges!**

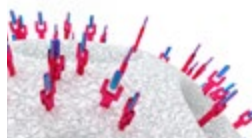
AZURA® Bio purification: You choose the method

Size Exclusion Chromatography (SEC)



Separate according to size.
See page 22 for a specialized AZURA system for SEC.

Affinity Chromatography (AC)



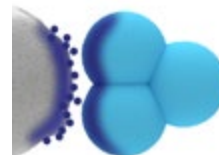
Specific binding of protein of interest.
See page 23 for a specialized AZURA system for AC.

Ion-Exchange Chromatography (IEX)



Separation takes place according to the charge of the protein and gradient elution.

Hydrophobic Interaction Chromatography (HIC)



Separation is performed based on hydrophobic interaction and gradient elution.

Purification strategy: Often a sequence of different methods is used in purification.

Capture

Intermediate

Polishing

Normally a combination of methods is used in protein purification.

- The “capture” step purifies the protein from the crude extract.
- The “intermediate” step removes further contamination.
- The aim of the final “polishing” step is to get rid of all remaining impurities in order to gain a highly purified product.
- Automatization of two purification steps is possible using the especially designed AZURA Two step purification system (see page 24).

AZURA® Bio Lab purification system

From simple to complex, from lab to pilot scale: Design your AZURA® FPLC system according to your purification task!

AZURA Bio Lab allows you to create FPLC systems with highest independence. Just pick your modules and build-up the system yourself. The intuitive software PurityChrom will be flexibly adjusted to your system.

Detection

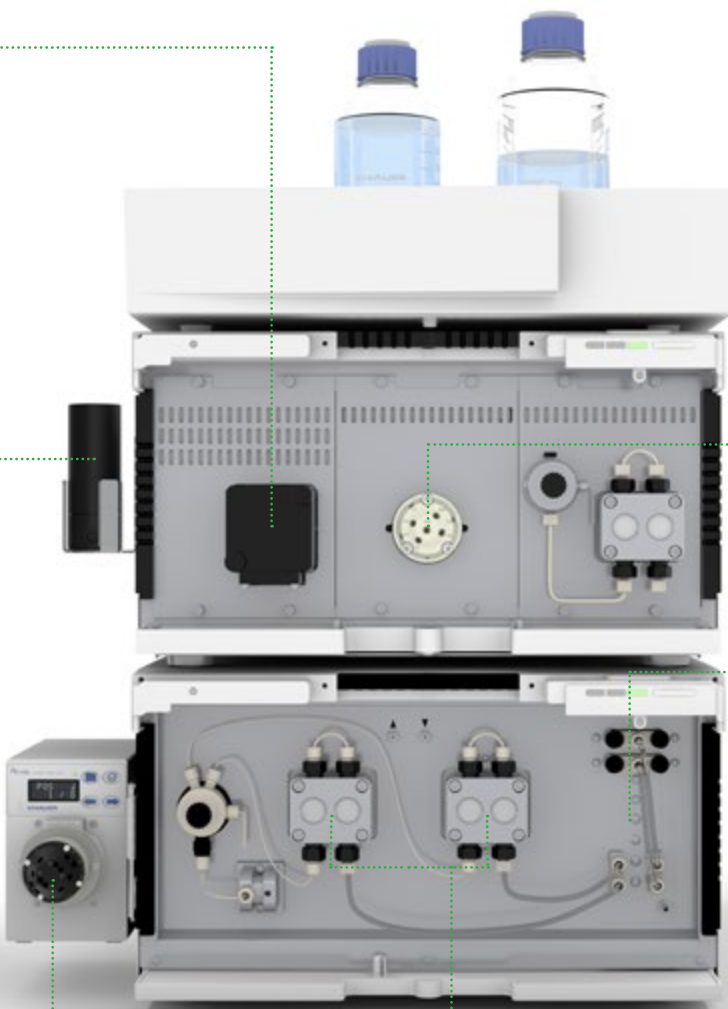
Various detectors: UV/VIS, diode array, refractive index, fluorescence and a selection of flow cells (see page 16)

Fraction collection

Various fractionation valves and fraction collectors with fraction racks ranging from 96-well-plates up to bottles (see page 18)

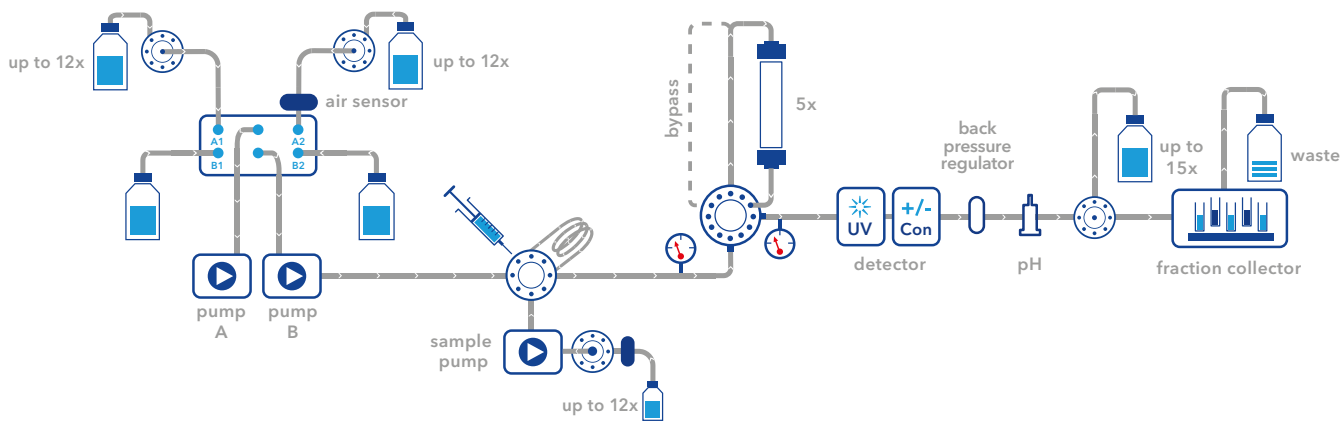


Conductivity monitor
(see page 16)



Column and loop selection valve
Choose between five columns or loops.
Reverse flow possible.

Buffer delivery
Quaternary or binary pumps with flow rates up to 10 ml/min or 50 ml/min (see page 6)



BUFFER SELECTION & DELIVERY

SAMPLE INJECTION

COLUMN SELECTION

DETECTION

FRACTION COLLECTION

Intuitive PurityChrom® software
(page 26)

Sepapure® FPLC columns
(page 12)

Automate your purification
(page 24)

○ **Injection**

Manual or automated injection: via loop, sample pump or auto-sampler, sample selection valves available for up to 12 samples



Supporting all columns.

○ **Buffer selection**

Integrated buffer selection valve for 4 buffers, extra buffer selection valve optionally available
(see page 6)



Cold-room operation is supported.



Scale-up from lab to pilot

Choose the Pilot series if you want to increase your productivity even more. Upscale our Lab configuration with same flexibility, software PurityChrom® and minimal footprint. Just transfer and upscale your methods. Flow rates up to 1 000 ml/min.

Find more information: www.knauer.net

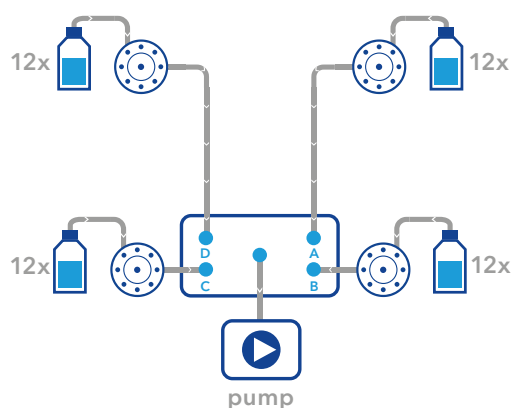
Configure your AZURA Bio purification system
Find all FPLC products on the following pages.

Buffer delivery

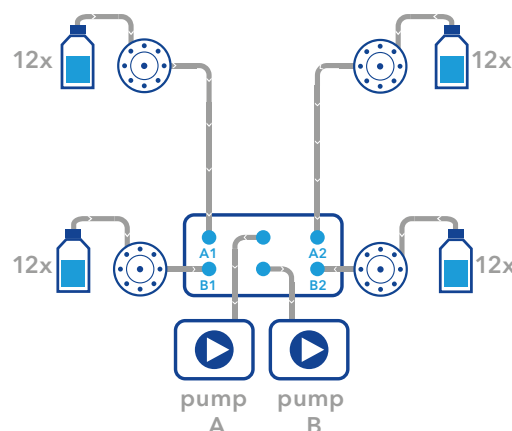
Precise and reliable pumps covering a wide flow rate range, gradient and buffer selection options.

Buffer selection

Automated switching between buffers is important for method development, column cleaning and regeneration. The pump P 6.1L features a build-in 2 x 2 buffer selection valve (A1, A2 and B1, B2) or 4 x buffer selection valve (A, B, C, D). You can extend buffer selection with additional valves each for up to 12 buffers.



AZURA pump P 6.1L LPG - Quaternary gradient



AZURA pump P 6.1L HPG - Binary gradient

Compact pump AZURA® Pump P 4.1S

Isocratic pump with small footprint for dedicated applications or sample loading.



KNAUER pulse damper

- For pressure sensitive FPLC columns
- Reduces pulsation
- Improves baseline stability
- Install pulse damper after pump

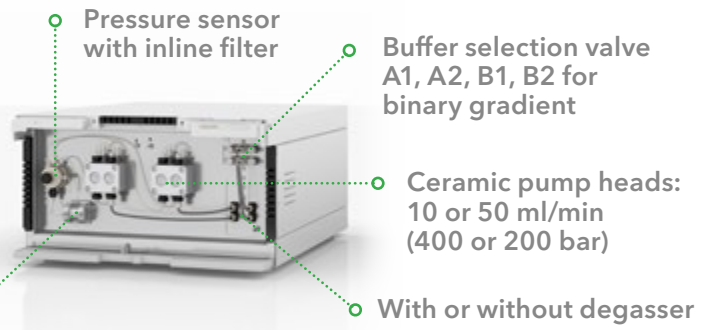


Gradient pump AZURA® Pump P 6.1L

High-performance gradient pump optimized for low pulsation

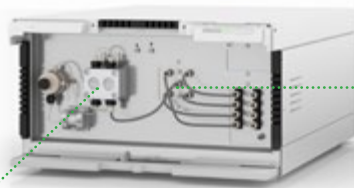
P 6.1L
HPG

Low-volume mixer



P 6.1L
LPG

Ceramic pump head: 10 ml/min (400 bar)

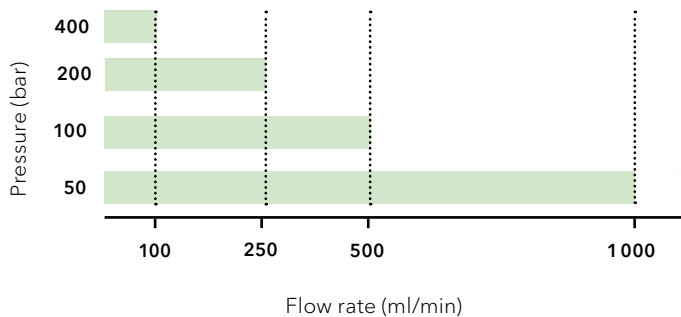


Buffer blending valve A, B, C, D for quaternary gradient

Let the pump mix your buffer.

Scale-up pump AZURA® Pump P 2.1L

Pumps for high flow rates

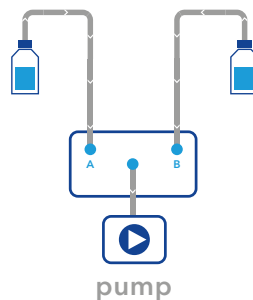


Titanium pump head with optional gradient valve

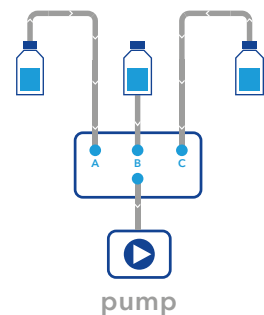
Pressure sensor

Gradient options

From binary to quaternary gradient, with additional P 2.1L pumps or cost-effective binary low pressure gradient (2 × 1 buffers, up to 800 ml/min) or ternary low pressure gradient (3 × 1 buffers, up to 220 ml/min).



Binary low-pressure gradient



Ternary low-pressure gradient

Binary or quaternary gradient?

A quaternary low pressure gradient (LPG) module* dynamically composes the buffer on the inlet-side or low pressure side of the pump head, by quickly switching the selection valve between the dif-

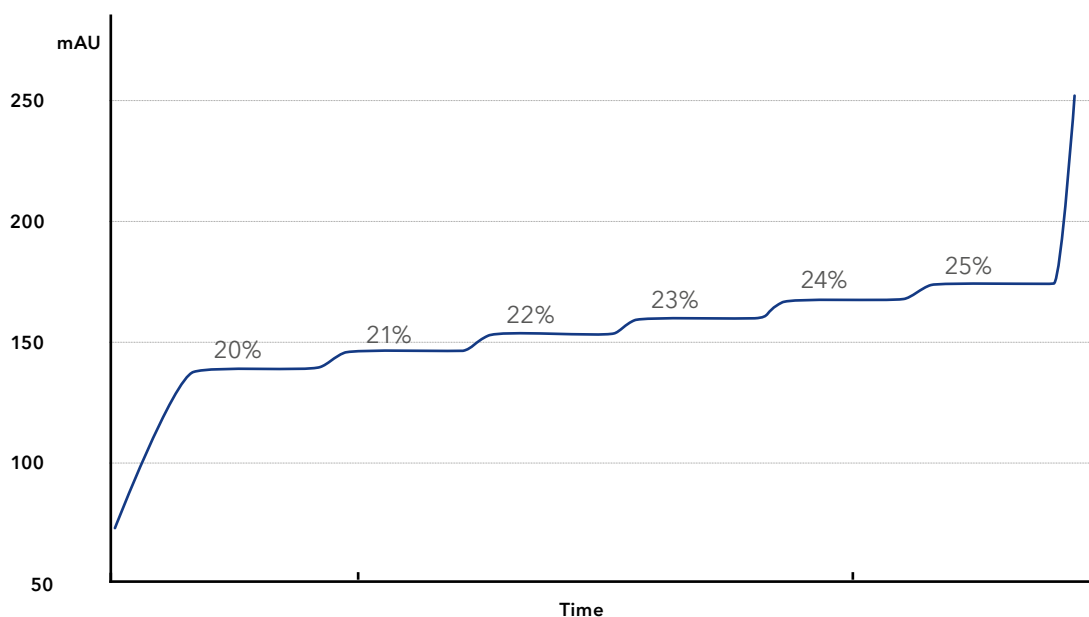
ferent channels. The buffer in a binary high pressure gradient (HPG) system is composed by combining the flow of two pumps.

Quaternary gradient

- Low investment costs
- Limited flow rate range
- Channel usable for sample injection
- Gradient accuracy absolutely sufficient for FPLC

Binary gradient

- Less wear
- No flow rate limitation
- Sample pump for sample injection (recommended)
- High accuracy for special application



Excellent gradient reproducibility of 0.3 % RSD. overlay of 6 repetitions at 1 ml/min run with pump P 6.1L low pressure gradient version

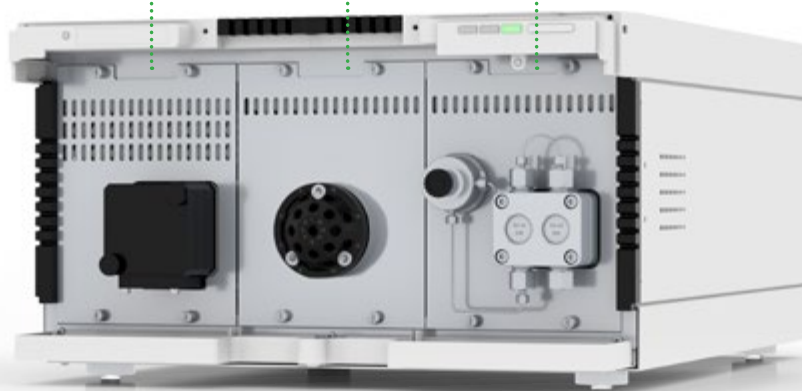
Docking station for pumps, valves and detectors

AZURA® Assistant ASM 2.2L

The Assistant ASM 2.2L is a docking station for three compact devices. Valves, pumps and UV detectors can be combined in one housing. The plug-in modules are removed by loosening four screws allowing the user to exchange modules in case of service within minutes. Likewise, the configuration of the FPLC system can be adapted to new requirements. Routine maintenance work e.g. replacing the lamp of a detector is easily performed by the user.

Depending on the integrated modules the assistant fulfills many different tasks like eluent delivery, detection, sample and solvent selection, sample injection, column switching or fraction collection. An assistant including a pump, injection valve, and detector features a complete FPLC system, like AZURA Bio SEC or AZURA Bio AC. As a part of a larger system, the ASM 2.2L allows the user to customize the system configuration according to the purification challenge.

○ **Freely combine pumps, valves and detectors in one housing**



Configure your assistant

Use the web-based assistant configurator to find your desired AZURA® ASM 2.2L module combination:

www.knauer.net/assistantconfigurator



Sample injection

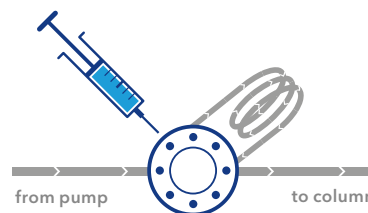
Choose between manual or automated sample injection. Available modules include injection valve, sample pump, loop valves and autosampler.

Injection valve

Integrated into assistant or as standalone module:

The Multi-Injection valve for **AZURA Bio Lab** systems enables the sample injection via loop and sample pump. Using this smart valve the setup of an two-step purification is fast and easy.

The 2-position injection valve for **AZURA Bio pilot** systems is perfect for injection via a sample loop or a sample pump. If both injection possibilities are needed simply add two valves to your configuration.



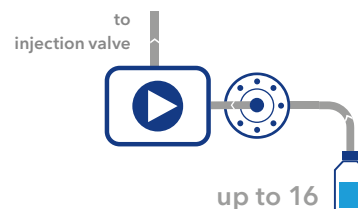
Sample pump

Integrated into assistant or as standalone module:

The AZURA P 4.1S is perfect for injecting large sample volumes and repetitive loop fills.

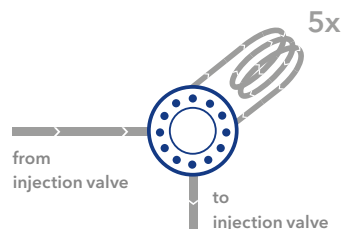
Do you have many samples?

You can extend your configuration with additional valves for 16 samples.



Loop valve

The Loop valve can be optionally used to connect up to 5 loops to the system or to collect intermediate fractions in automated two-step purifications with an AZURA Bio Lab system. Various sample loops are available.



Autosampler

Process many different samples fully automatically with the Autosampler AS 6.1L.

- Up to 10 ml injection volume
- From microtiter plates to 10 ml vials
- Active cooling
- Metal-free
- Stacked injections

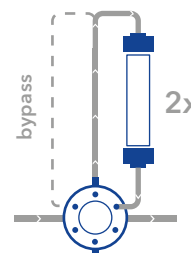


Column selection

Different options for column selection are available.

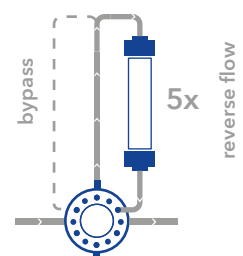
2-position valve

- Select two columns or one column and one bypass
- Flow rates up to 500 ml/min possible



Column selection valve

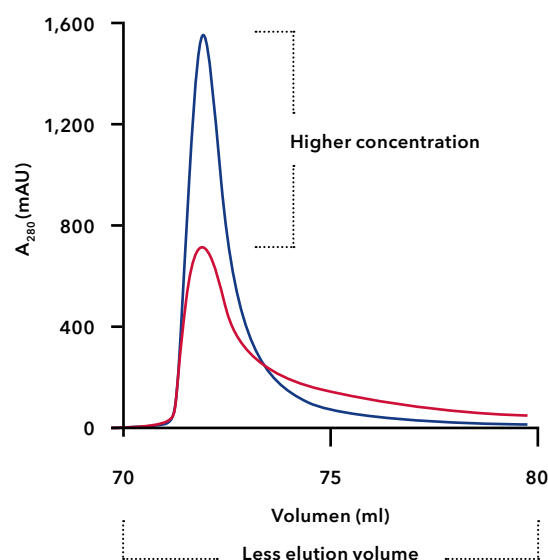
- For up to 5 columns and 1 bypass
- Reverse flow
- Flow rates up to 50 ml/min



Why is the reversed flow option popular in affinity chromatography?

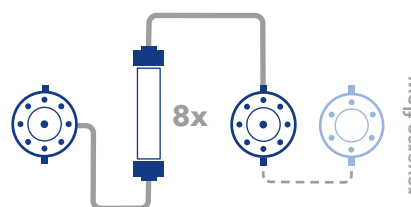
In affinity chromatography your target molecules will accumulate at the top of the column. Elution in the same direction dilutes your target molecule along the column. By elution with reversed flow you increase the concentration while decreasing the sample volume.

The option has an additional major advantage. Clean your columns more efficiently using reverse flow. By this you elute contamination the shortest way and minimize damage to the column.



Higher flow rates?

Use the column selection assistant to select eight columns assuring a flow rate up to 500 ml/min. An additional valve allows to reverse the flow.



Sepapure®

Bio purification columns and media

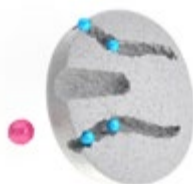
The perfect addition to any FPLC system

Size Exclusion Chromatography (SEC)

In size exclusion chromatography biomolecules are separated according to their size. There are two different methods used in SEC which are defined by the matrix of the FPLC columns.

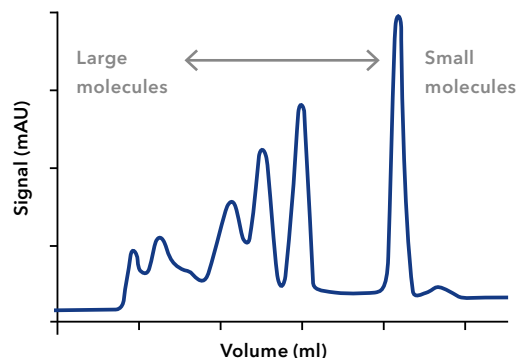
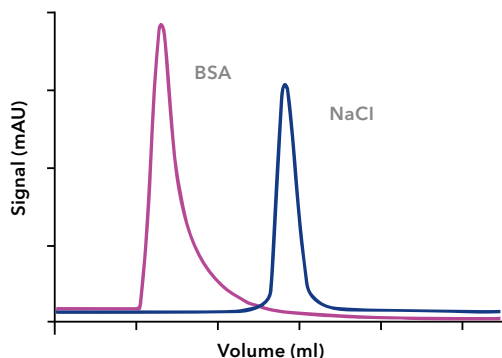
Group separation

Separation of small molecules from large molecules (e.g. **Desalting**)



High resolution separation

Separation of larger biomolecules within the fractionation range of the column matrix



Sepapure® Desalting columns

Prepacked 5 ml columns

Key features

- Dextran based beads with particle sizes ranging from 20-50 μm
- 5 kDa exclusion limit (all molecules bigger than 5 kDa are not retained)
- Recommended flow rates: 1-5 ml/min (5 ml column)
- Maximum pressure: 3 bar
- Stored in 20% Ethanol



Developed for your FPLC application

Reliable and convenient

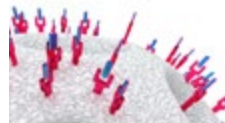
Affinity Chromatography (AC)

In affinity chromatography a highly specific interaction between the biomolecule of interest and the column matrix is resulting in the enrichment of the biomolecule at the stationary phase during the loading phase. Byproducts can be easily washed

off in the wash phase. The elution of the target biomolecule is realized by washing the column with a buffer including a high amount of competing ligand or low pH.

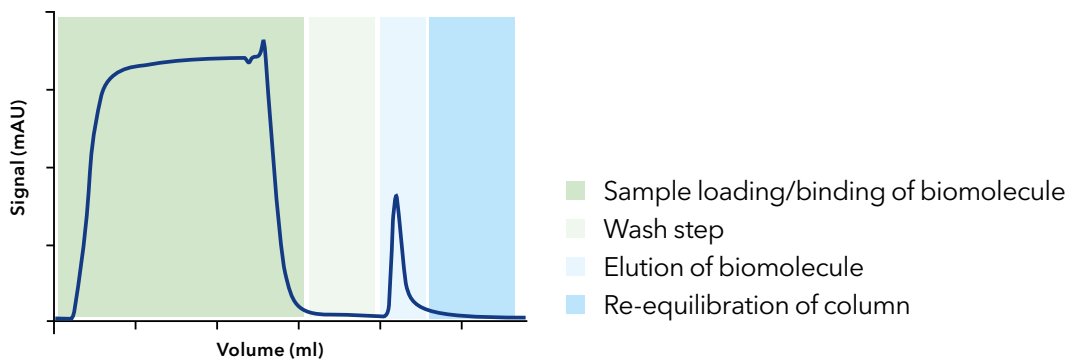
Recombinant tagged proteins

His - Tag via Ni-NTA column



Antibodies and antibody fragments

via Protein A immobilized on column
via Protein G immobilized on column



Sepapure® Affinity columns

Prepacked 1 ml and 5 ml columns

Key features

- Agarose based beads with particle size of 100 μm on average
- Static binding capacity: Ni-NTA > 40 mg/ml
Protein A > 30 mg/ml human IgG; Protein G > 15 mg/ml human IgG
- Recommended flow rates: 1-5 ml/min (5 ml column)
- Maximum pressure: 3 bar
- Stored in 20% Ethanol

Ion-Exchange Chromatography (IEX)

In ion-exchange chromatography biomolecules are separated according to their charge. Anion exchange is the method in which negatively charged molecules are binding to a positive matrix and in cation exchange positively charged

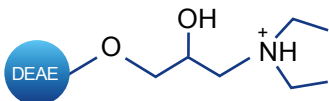
biomolecules are binding to a negative column matrix. The bound molecules are released from the matrix by a gradual increase in ionic strength of the elution buffer.

Anion Exchange

Strong Anion Exchanger (Q)



Weak Anion Exchanger (DEAE)

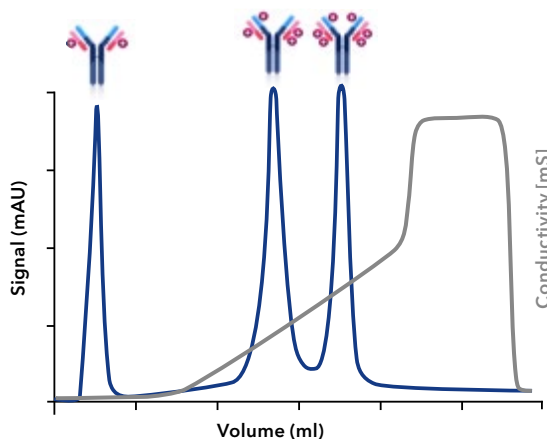
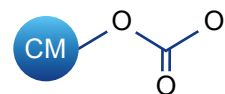


Cation Exchange

Strong Cation Exchanger (SP)



Weak Cation Exchanger (CM)



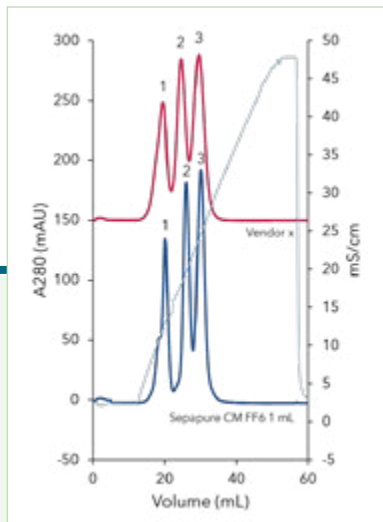
Sepapure® Ion-Exchange columns

Prepacked 1 ml and 5 ml columns

Key features

- Agarose based beads with particle size of 100 µm on average
- Ion capacity: 0.08-0.16 mmol/ml
- Recommended flow rates: 1-5 ml/min (5 ml column)
- Maximum pressure: 3 bar
- Delivered in 20% Ethanol





Comparison to other vendor

See information on detailed comparison of columns:

www.knauer.net/sepapure

Sepapure® bulk material

Next to prepacked FPLC columns KNAUER also offers FPLC bulk media for high performance purifications from lab to large-scale protein purification.

In addition to the media used with the prepacked FPLC cartridges we also offer SEC resins for high resolution separations.

Resin Type / Volume	5 ml	10 ml	25 ml	50 ml	100 ml	150 ml	250 ml	500 ml	1000 ml
Ni-NTA			•		•		•	•	•
Protein A	•		•	•	•		•		•
Protein G		•	•						
IEX-Resins			•		•			•	•

Detection

We provide a choice of UV/VIS detectors, ranging from single variable wavelength to 8-channel diode array detector with 3D scan capability.



Detector	UVD 2.1S	MWD 2.1L	DAD 2.1L
	Compact and cost-effective variable single wavelength UV/VIS detector	Reliable multichannel UV/VIS detector	Diode array detector for peak purity check
Wavelength	190–500 nm	190–700 nm	190–700 nm
Channels	1	4	8
3D scan	n/a	n/a	+
Integrable in ASM	+		

More UV detectors available for your applications: www.knauer.net/detectors

Mikron 81 Conductivity Monitor

- Conductivity monitor for following of salt gradients
- Flow rates up to 1 000 ml/min
- 0.02 mS/cm–500 mS/cm
- Backpressure free



Flow cells for Mikron 81

AZURA Lab	1/16" or 1/8"	100 ml/min	11 µl dwell volume
AZURA Pilot	1/16" or 1/8"	1 000 ml/min	53 µl volume

AZURA pH Monitor pH 2.1S

- pH monitor for checking Buffer composition
- flow rates for up to 1 000 ml/min
- pH measurement range 2–12



Flow cells for pH 2.1S

AZURA Lab	1/16" or 1/8"	100 ml/min	80 µl dwell volume
AZURA Pilot	1/8" or 3/16"	1 000 ml/min	250 µl volume

AZURA® Detector RID 2.1L

Refractive Index Detector for cost-effective, fast and reliable analysis of non-UV absorbent compounds.



Universal detection

A wide range of third-party detectors can be seamlessly integrated into AZURA® systems.

Gradient compatible and universal detection



Light scattering detector

Using the unique Low Temperature technology, this Evaporative Light Scattering detector LC allows universal high sensitivity detection of non-UV active substances.

Fluorescence detector RF-20A

The fluorescence detector RF-20A provides world-class sensitivity, excellent maintainability and diverse validation / support functions. It supports a wide range of applications from conventional to high-performance analysis.

Caution!
May cause higher back pressure



Sensitive and selective fluorophor detection



The KNAUER interface box IFU 2.1 LAN allows precise analog data acquisition of third party modules.

Flow cells

Select from an impressive range of easily exchangeable flow cells which cover a wide range of application. Optional fiber optics technology offers the possibility to separate the flow cell spa-

tially from the device providing enhanced security for hazardous, explosive or toxic work processes.

Fraction collection

Collect large quantities or large numbers of fractions

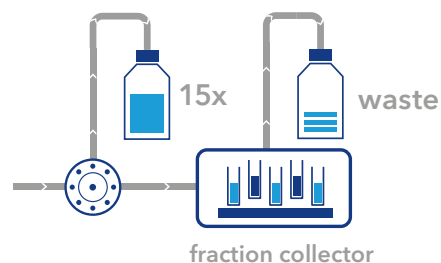
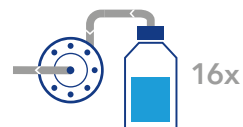
Manually - collection by direct control

Volume-based - collection at defined volumes

Peak-based - collection according to detector signal

Outlet Valves

- Collecting large quantities ideal for flow-throughs and wash fractions
- Used as single unit for up to 16 fractions in an AZURA Bio Lab system or 8 fractions in an AZURA Bio Pilot system
- Valves can be daisy chained with a fraction collector



Foxy Fraction collector

The Foxy R1 and Foxy R2 are versatile fraction collectors which fit to every purification need.

- Up to 125 ml/min for Foxy R1 and 1 000 ml/min for Foxy R2
- Wide choice of racks from 96-well micro-plates up to bottles or funnels
- Double capacity for Foxy R2 with automatic rack recognition
- Active cooling for Foxy R1
- Stand-alone operation
- Repeated collection in same vials







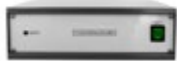


Vario 4000 & Vario 4000 plus






The Vario 4000 is a more advanced fraction collector for demanding applications with high flow rates and a high number of fractions. Individual rack types are programmable. Just assemble your rack to your needs.

- For flow rates up to 1 000 ml/min
- High number of fractions
- Standalone operation possible

Accessories

Accessory	Features	Benefit
Pressure Control 	<ul style="list-style-type: none"> • Contains two pressure sensors • Automatic determination of pressure difference with PurityChrom® • Connect 1/16" or 1/8" tubings • Up to 250 ml/min and 60 bar 	Monitors pressure over the column bed and protects column from damage
Air Sensor 	<ul style="list-style-type: none"> • Detect end of buffer or end of sample with PurityChrom® • Up to 12 air sensors per system • For transparent tubings with 1/16" or 1/8" or 1/4" outer diameter 	Protect column from air damage and support automation (e.g. sample injection)
AZURA® Click 	<ul style="list-style-type: none"> • Attach air sensor, pressure control, AZURA Organizer or your interface box to the side panel of your AZURA L device 	Organize your system.
AZURA® Organizer 	<ul style="list-style-type: none"> • Attach columns from 5 mm to 26 mm diameter, falcon tubes, a back pressure regulator or a pH flow cell 	Organize accessories directly at the system and reduce dead volume
Back pressure regulator (BPR) 	<ul style="list-style-type: none"> • Apply a constant back pressure to your system • Freely adjustable between 1-20 bar or 20-103 bar 	Prevent formation of air bubbles after the column which disturb detector signal
AZURA® Benchtop Rack 	<ul style="list-style-type: none"> • Install AZURA systems at space-limited sites, especially in cold rooms. 	Space-saving solution for AZURA system setup
Ethernet Eventbox 	<ul style="list-style-type: none"> • Organize up to 12 input or output signals like for example 12 air sensors in one system 	Automate method steps and trigger 3rd party devices

AZURA® Bio purification systems

Product	Features	Page
AZURA Bio SEC 	0.001-10 ml/min, maximum 50 bar, injection valve sample for sample loops, variable single wavelength UV-detector, XY fraction collector, PurityChrom® software	22
AZURA Bio AC 	0.01-50 ml/min, maximum 50 bar, selection valve for 12 buffers/ samples, variable single wavelength UV-detector, fraction valve for 15 fractions and waste, PurityChrom® software	23
AZURA Bio Lab 	0.01-50 ml/min, maximum 240 bar, sample injections via sample loop and sample pump, variable single wavelength UV-detector, XY fraction collector, PurityChrom software (basic license). Exemplary System - configure your FPLC system based on your purification requirements	4
AZURA Bio Lab Advanced configuration 	0.01-50 ml/min, maximum 50 bar, sample injection via sample loop or sample pump, automated storage and reinjection of proteins possible, multichannel UV-detector, conductivity detector, outlet valve, XY fraction collector, PurityChrom Software	24
AZURA Bio Pilot 	Up to 1 000 ml/min, sample pump for large sample volumes, variable single wavelength UV-detector, XY fraction collector, PurityChrom® software in basic configuration. Configure your FPLC system based on your purification requirements. Scale-up is possible with same flexibility, software but minimal footprint.	5

Components from lab to pilot

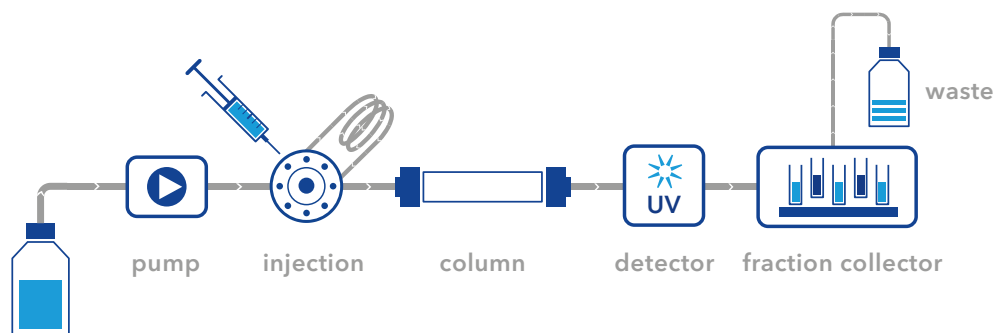
Product	Features	Page
Buffer delivery		
Compact pump	10 or 50 ml/min, isocratic	6
Gradient pump	10 or 50 ml/min, quaternary: selection of 4 buffers (A, B, C, D) Binary: selection of 2 buffers (A1, A2, B1, B2)	7
Scale-up pump	100, 250, 500, 1000 ml/min, binary to quaternary gradient	7
Extended buffer selection	With additional valves each for 12 buffers	6
Sample selection	For maximum 12 samples	10
Columns		
Column selection valves	For 2 columns, 5 columns and 5 columns with reverse flow option	11
Sepapure® columns and media	Columns and media for Affinity, Size Exclusion and Ion-Exchange Chromatography	12
Detection		
Wide choice of detectors	Variable single wavelength UV, multiple wavelength UV, full spectra diode array (DAD/3D Spectrum), conductivity and pH monitor, fluorescence, refractive Index	16
Fraction collection		
Fractionation valve	For 6 to 16 fractions, depending on the valve type with flow-rates up to 1000 ml/min	18
Fraction collector	From 96-well microplates up to bottles or funnels, up to 1000 ml/min	18
Sample injection		
Injection valve	1/16" tubing: up to 50 ml/min 1/8" tubing: up to 500 ml/min	10
Sample pump	10 or 50 ml/min	10
Autosampler	Up to 10 ml injection volume, from microtiter plates to 10 ml vials	10
Software		
PurityChrom® software	Highly flexible method writing, intuitive user-interface, volume- or time-based, with special features like system visualisation, hold & adjust option, extended threshold functions, check for impurities	26
Safety features		
Accessories for protection and automation	Air sensor, pressure control, back-pressure regulator, leak management, mounting solutions	19

AZURA® Bio SEC system

Time consuming gel filtration runs?

AZURA Compact SEC systems take over time-consuming SEC methods in your lab without blocking your valuable FPLC system. Due to its compact design and intuitive FPLC software PurityChrom®, the system offers outstanding performance and

ease of use. Pre-designed methods are included in the software for the designated SEC system and can be easily adapted by changing the column volume. AZURA Compact SEC supports all columns available on the market.



Key features

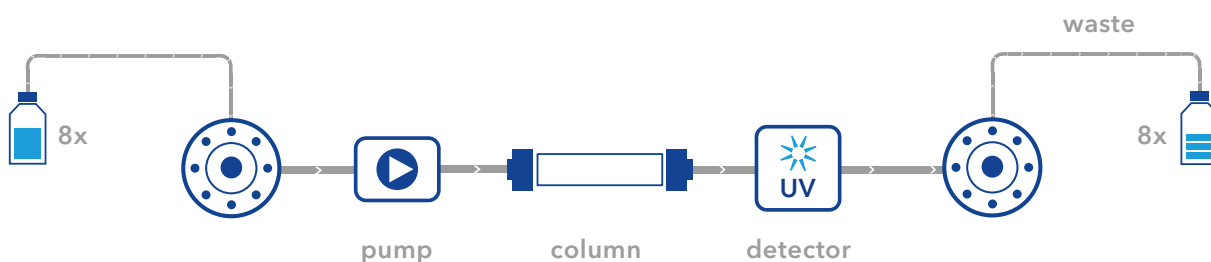
- Flow rate: 0.001-10 ml/min; 0.1-8.0 ml/min (recommended)
- Maximum system pressure: 50 bar
- Injection valve for sample injection via sample loop
- Variable single wavelength UV-detector (190-500 nm)
- Fraction collector for fractionation
- Columns from all vendors can be used
- PurityChrom® software


AZURA® Bio AC system

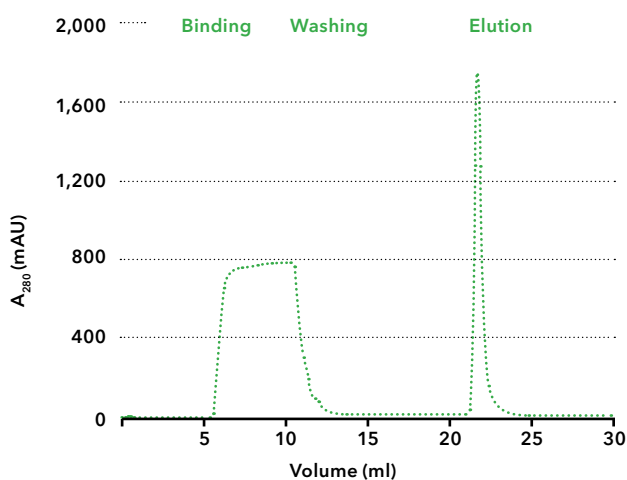
For affinity chromatography

The AZURA Compact AC system qualifies for fast and reliable affinity chromatography. Select your sample, your washing and elution buffer using

the selection valve. Your proteins of interest are detected by UV and automatically collected via the fractionation valve.




Use the selection valve for your buffers and sample.



Key features

- Automatic sample/ buffer selection valve for up to 12 buffers or samples
- Fraction valve (16 ports) for fractionation
- Flow rate: 0.01-50 ml/min; 1-40 ml/min (recommended)
- Variable single wavelength UV-detector (190-500 nm)
- Columns from all vendors can be used
- PurityChrom® software
- Maximum system pressure: 50 bar

Protein purification based on high affinity Chromatogram & Legend

Special configuration

Two step purification

Special multi-column chromatography solutions

Protein purification involves most of the times two to three steps:

1. capture step
2. optional intermediated step
3. polishing step

The transition from one to another step generally involves manual interaction and thus is time consuming. Automation by combining these steps increases the efficiency and optimizes the workflow. The quick and automated linkage of multiple

chromatographic purification steps into one method eliminates manual sample handling and minimizes time spent between steps. This automation strategy can be easily adapted to each purification task.

Detection

Multiple wavelength detector

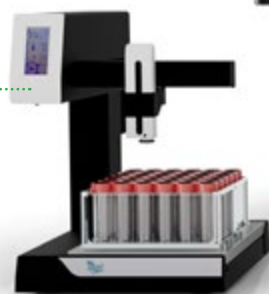
Conductivity

Monitor your salt gradient

Outlet valve

Collection of large volume fractions like flow through, wash fractions etc.

Fraction Collection



Sample injection

For large and small sample volumes

Column selection

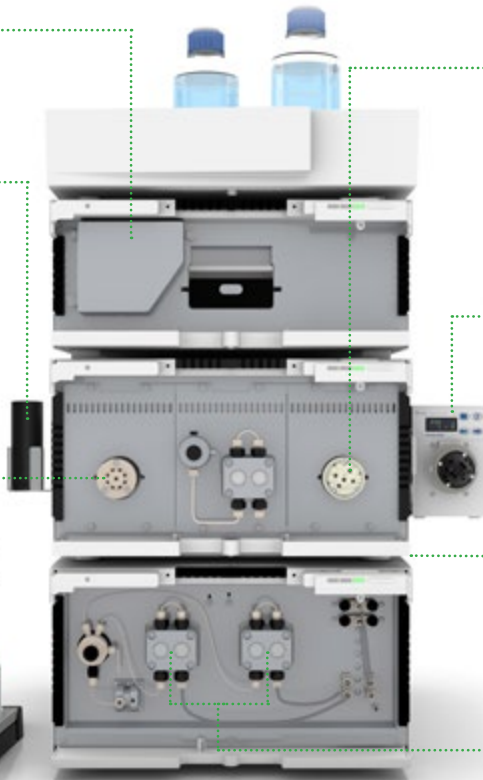
Select between 5 columns and one bypass, reverse flow

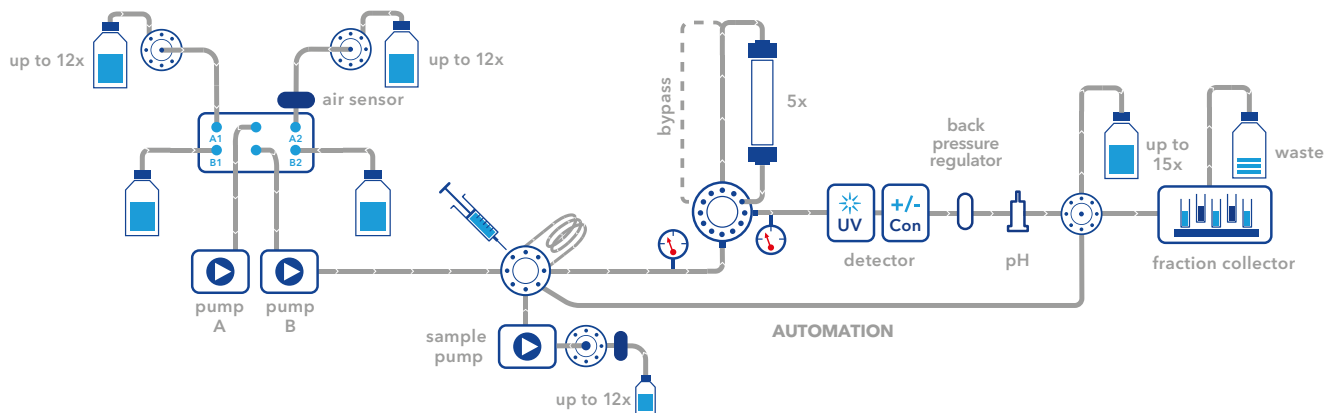
Buffer selection

Select between 4 buffers

Buffer delivery

System pump with binary gradient





BUFFER SELECTION & DELIVERY

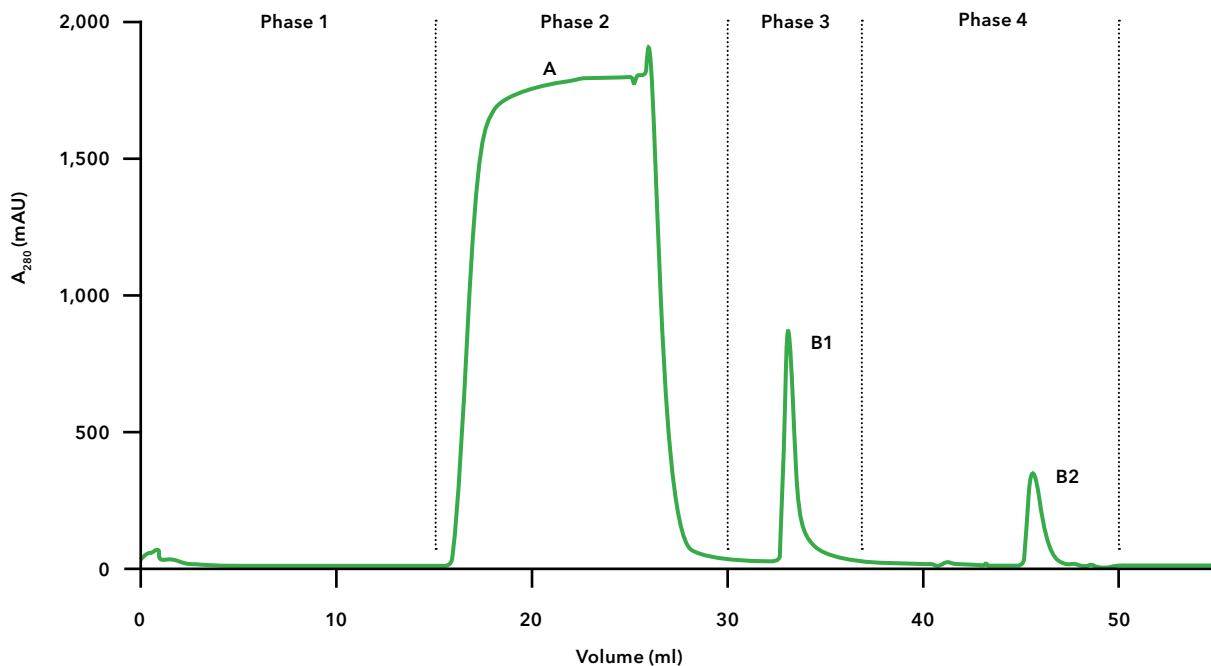
SAMPLE INJECTION

COLUMN SELECTION

DETECTION

FRACTION COLLECTION

Automated two-step purification of mouse IgG antibodies



The affinity chromatography step was automatically combined with a gel filtration step to exchange the buffer of the purified mouse IgG antibodies; Phase 1: Column equilibration, Phase 2: Sample injection and washing, Phase 3: Elution of IgG from protein A column, Phase 4: Desalting of IgG

Control your purification

PurityChrom® 6

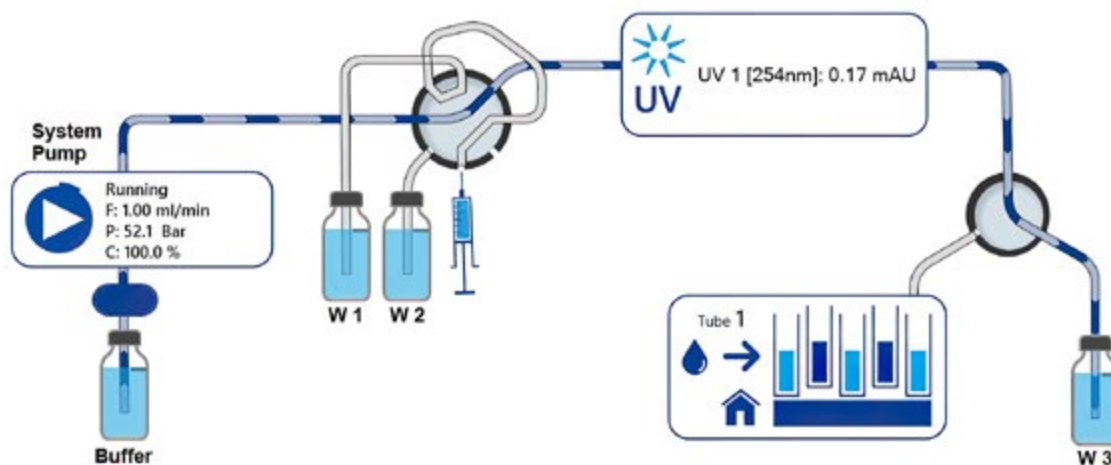
PurityChrom is a powerful software to control your purification system. With its revised, modern user interface, new powerful features and improved useability, PurityChrom 6 is a new generation of

our purification software PurityChrom. The software is developed according to GAMP 5 guidelines and is 21 CFR part 11 compliant.

Animated flow path

See exactly what you are doing and easily avoid mistakes with the animated flow path. Device functions for example starting the pumps, setting

the flow rates, switching the valves, change the wavelength of your UV detector are available via pop-up menus in the system visualization.



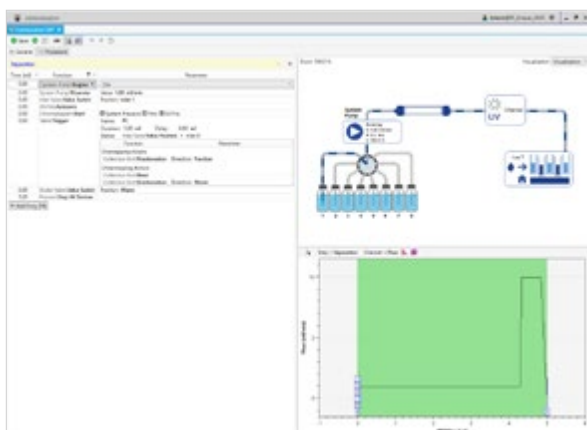
Configuration of multiple systems

PurityChrom 6 is as flexible as our KNAUER hardware. Multiple set ups can be configured in the software, e.g. configure the system with heating devices and without them, for all purification tasks that do not require temperature control.

Method writing with just a couple of clicks

In PurityChrom 6, methods can be written by simply clicking in the system visualization. Furthermore, a graphical editor enables a comparison between the current method and a previous chromatogram.

Methods can be created based on volume, column volume or time, depending on your preference. All solvent, waste and sample bottles can be configured and fill levels and solvent consumption are calculated, offering extra security during operation.



Advanced user administration

In PurityChrom 6, users can be assigned to a role simplifying the administration of a high number of users. An audit trail summarizes all actions of all users. Additionally, each chromatogram contains a run protocol summarizing the functions and events occurring during the method



Tutorials on YouTube

Get a first impression of PurityChrom 6 via the product video.

<https://www.youtube.com/KnauerHPLC>

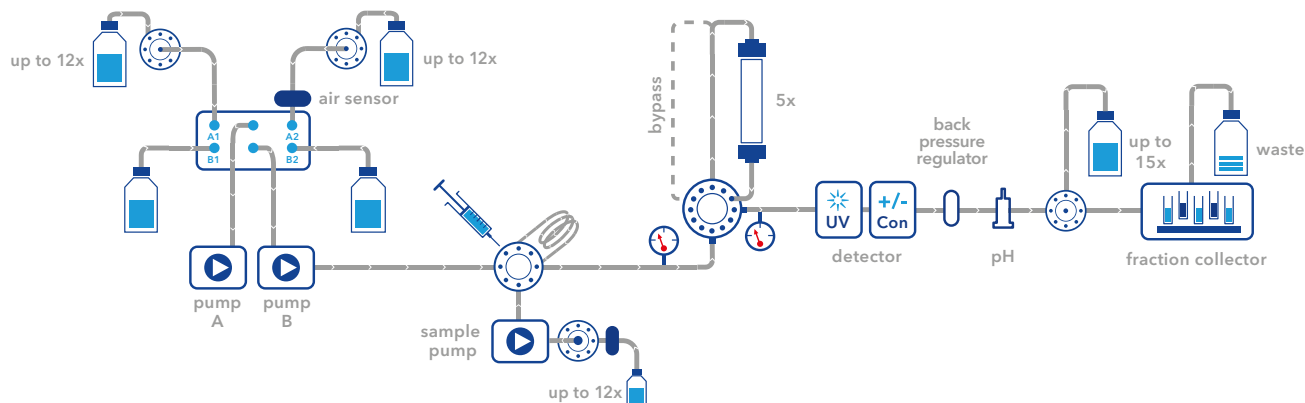


System configurator

Bio purification by KNAUER

METHOD

- SEC**
Size Exclusion Chromatography
- AC**
Affinity Chromatography
- IEX**
Ion-Exchange Chromatography
- HIC**
Hydrophobic Interaction Chromatography



BUFFER SELECTION & DELIVERY

- 10 ml/min binary gradient pump P 6.1L
- 10 ml/min quaternary pump P 6.1L
- 50 ml/min binary gradient pump P 6.1L
- x 100 ml/min pump P 2.1L
- x 250 ml/min pump P 2.1L
- x 500 ml/min pump P 2.1L
- x 1000 ml/min pump P 2.1L
- Ternary gradient module for pump P 2.1L
- Binary gradient module for pump P 2.1L
- x Buffer selection valve (12 further inlets)

SAMPLE INJECTION

- Multi-Injection valve
- x Injection valve
- Sample pump module
- Sample selection valve: x inlets
- Biocompatible Autosampler AS 6.1L

COLUMN SELECTION

- Column selection valve up to 50 ml/min (5 columns, one bypass, reverse flow)
- Column selection (two columns or one bypass)
- Column selection high flow (5 columns, one bypass)
- Column selection high flow (7 columns, one bypass, reverse flow)

DETECTION

- UV/VIS single wavelength
- UV/VIS multiwavelength
- Conductivity
- pH
- Fluorescence
- Refractive index
- Light Scattering
- Analog integration of further detectors

FRACTION COLLECTION

- Outlet valve
- Foxy fraction collector with fixed rack types
- Labocol fraction collector with individual rack types
- Rack for fraction collector

COLUMNS & MEDIA

- AC**: Protein A ml
- AC**: Protein G ml
- AC**: Ni-NTA ml
- IEX**: DEAE - Weak anion exchange ml
- IEX**: CM - Weak cation exchange ml
- IEX**: Q - Strong anion exchange ml
- IEX**: SP - Strong cation exchange ml

ACCESSORIES

- x Air sensor main pump
- x Air sensor feed pump
- x Tubing 1/16"
- x Tubing 1/8"
- Pressure control (2 pressure sensors)
- x Tubing 1/4"
- x Back pressure regulator
- Workstation (Windows)
- AZURA Organizer



Worldwide partner in science since 1962

Based in Berlin, KNAUER is a medium-sized, owner-managed company that has been serving the sciences since 1962. We develop and manufacture scientific instruments of superior quality for liquid chromatography. The range includes systems and components for analytical

HPLC/UHPLC, preparative HPLC, fast protein liquid chromatography (FPLC), multi-column chromatography/simulated moving bed (SMB), gel permeation chromatography/size exclusion chromatography (GPC/SEC), osmometry and Skids for the production of lipid nanoparticles (LNP).

Independent and family owned



It all started with a soldering iron, a jigsaw and an ingenious idea for a highly accurate electronic thermometer.


Chemist Dr.-Ing. Herbert Knauer founded the company together with his wife Roswitha in 1962. Both are still active as advisers to this day. The couple's daughter, Alexandra Knauer, is managing


director and owner of the company since the year 2000. As of April 2021, she is leading KNAUER together with Sales Director Carsten Losch.

Today, KNAUER is an established company with 180 employees that successfully develops, manufactures and markets chromatography instruments worldwide.


think LC. think KNAUER.

Disclaimer: Technical data or prices are subject to change without notice. Prices may vary by country and do not include taxes, customs duties or delivery. All trademarks are the property of their respective owners. Our general terms and conditions apply: www.knauer.net/terms.

Science with Passion 




AZURA®
Analytical ULDC/UHPLC



The most flexible HPLC platform.

think **LC**. think **KNAUER**.

AZURA® Analytical ULDC/UHPLC 

Science with Passion 




AZURA® SEC
GPC/SEC System Solutions



Robust system solutions for your GPC/SEC analysis and GPC cleanup.

think **LC**. think **KNAUER**.

AZURA® GPC/SEC System Solutions 

Science with Passion 




AZURA®
Preparative HPLC



Configure the best possible system for your purification workflow of peptides, oligonucleotides, RNA, cannabis and many other API with the market-leading AZURA preparative HPLC platform.

think **LC**. think **KNAUER**.

AZURA® Preparative HPLC 


Science with Passion 



Freezing point osmometry



Easy and fast determination of the osmolality of various aqueous solutions.

Freezing Point Osmometry 



KNAUER is the proud winner of the
German Innovation Award 2022 in the
category of medium-sized businesses.

(U)HPLC • Prep. LC • FPLC • SMB • LNP • Osmometry



Innovation

Own hardware and
software development



Customized solutions

Pumps, detectors, valves and
systems adapted to your needs



Made in Germany

Independent and family-
owned since 1962

think **LC.** think **KNAUER.**

KNAUER Wissenschaftliche Geräte GmbH

Hegauer Weg 38 • 14163 Berlin

+49 30 809727-0 • +49 30 8015010 (Fax)

info@knauer.net • www.knauer.net